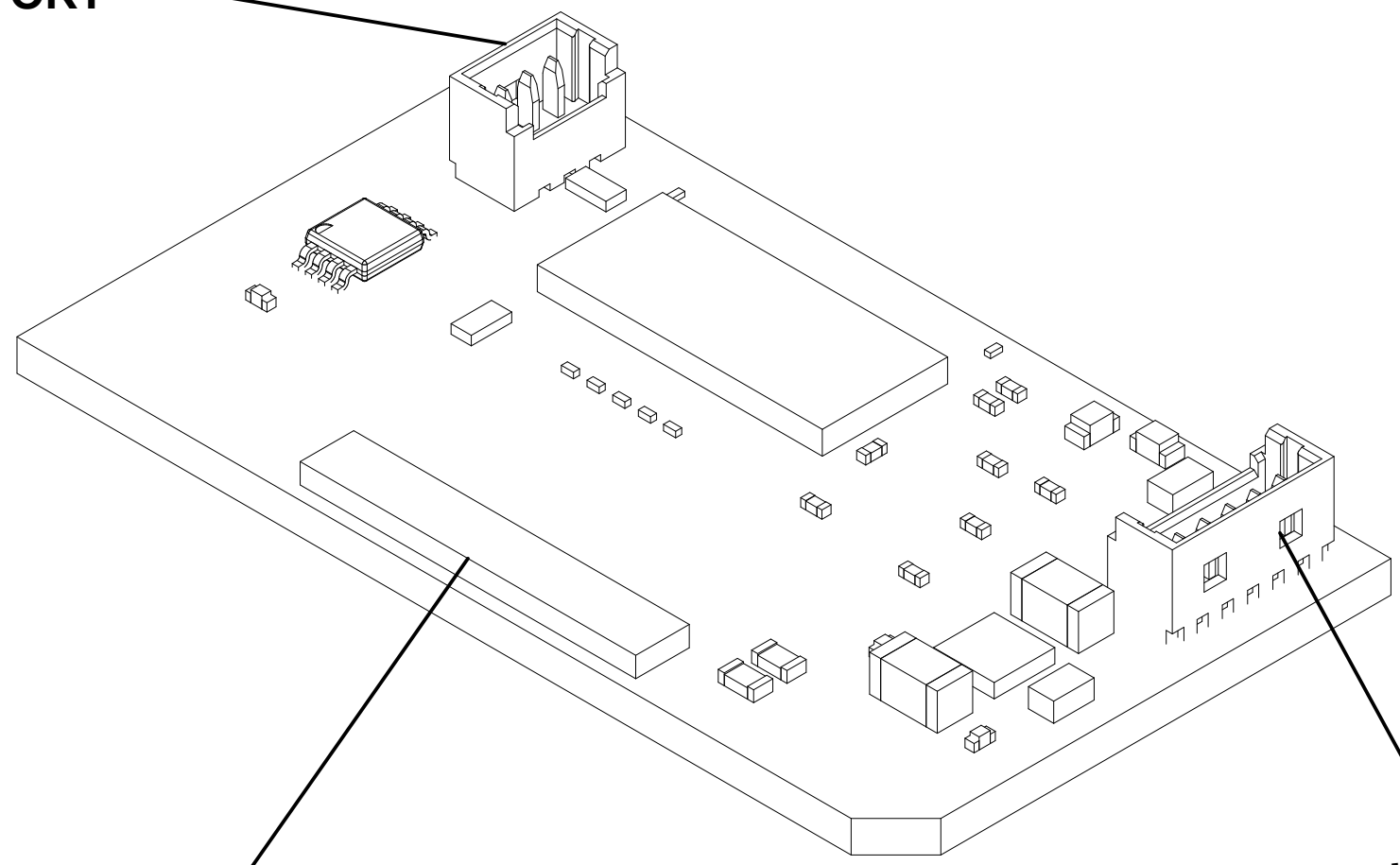


Max Component Height = [0.087in] 2.20mm

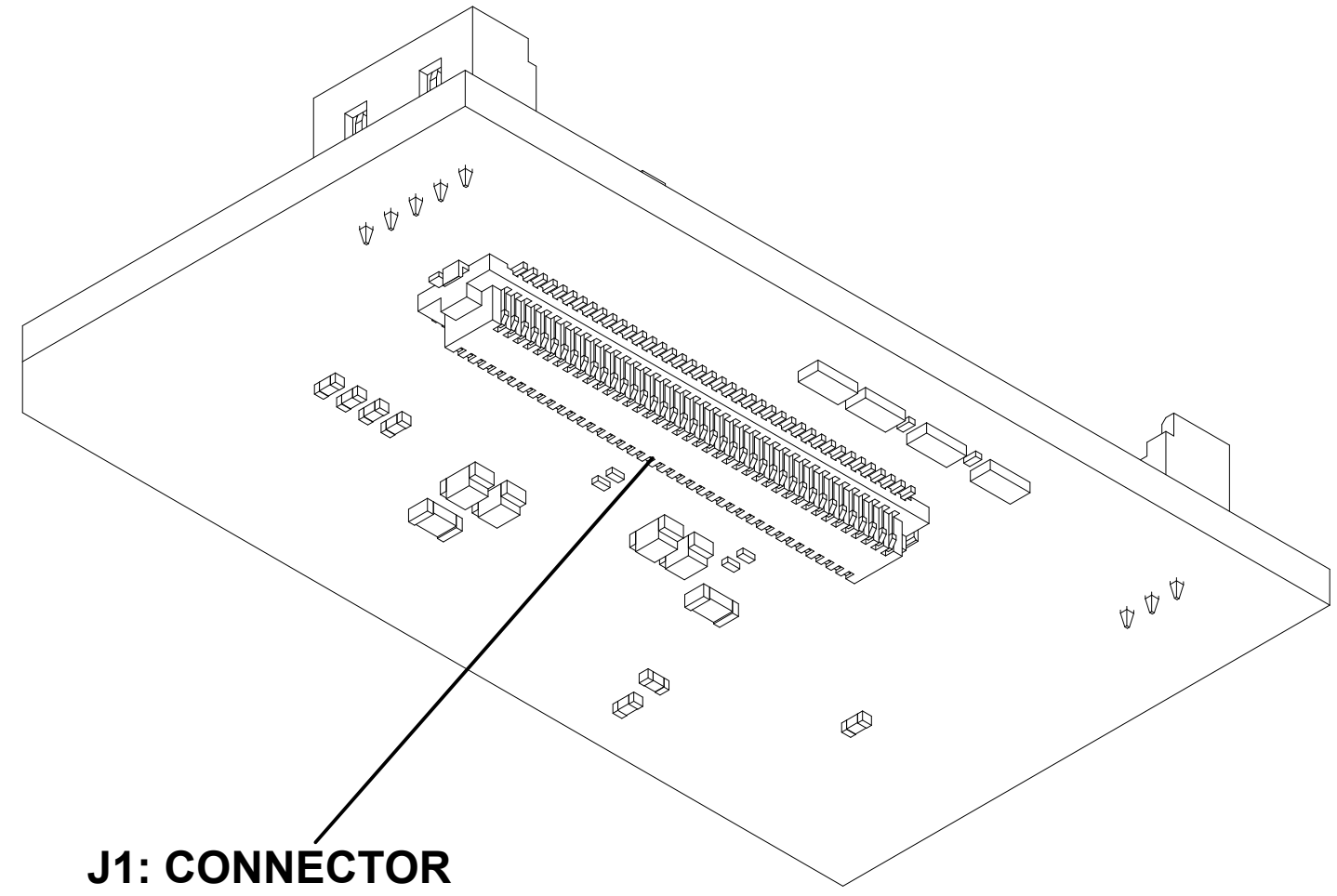
[Ø0.09in±0.008] Ø2.20mm±0.203

J2: SERIAL PASSTHROUGH PORT



J3: KEL CAMERA VIDEO INPUT

J4: I2C & 3.3V POWER



J1: CONNECTOR TO SLA-3000-OEM

UNLESS OTHERWISE SPECIFIED ALL DIMENSIONS IN INCHES TOLERANCES ARE:

.XX +/- .01
.XXX +/- .005

DIMENSION DRAWING		
PART NUMBER:	SLA-3000-CLK	
COMPANY NAME:	SIGHTLINE APPLICATIONS INC.	
HARDWARE REV:	C	
DWG REVISION:	C	
DRAWN BY:	WMH	
SIZE:	ANSI C	
		SHEET 1 OF 1