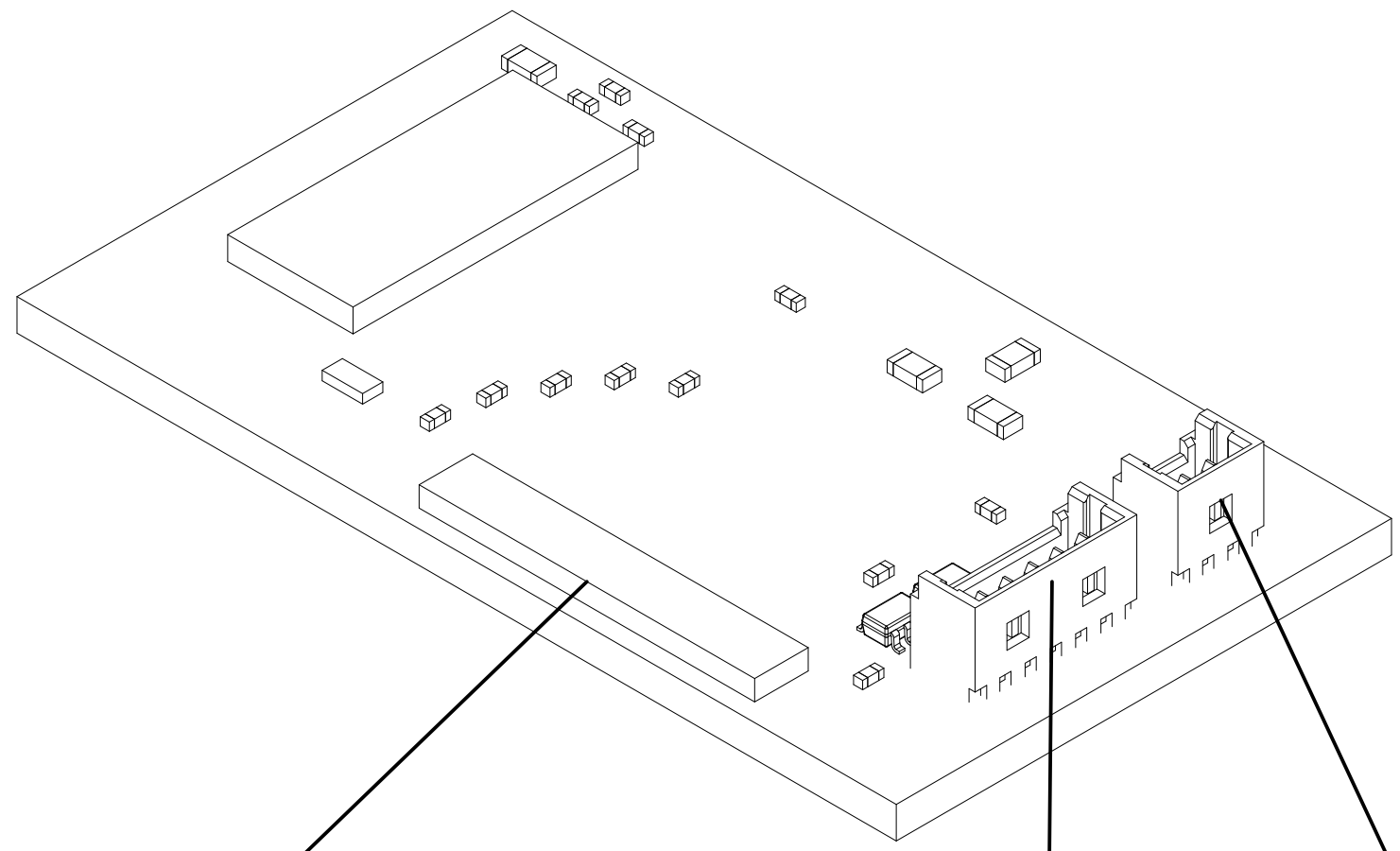


Max Component Height = **[0.087in]**  
**2.20mm**

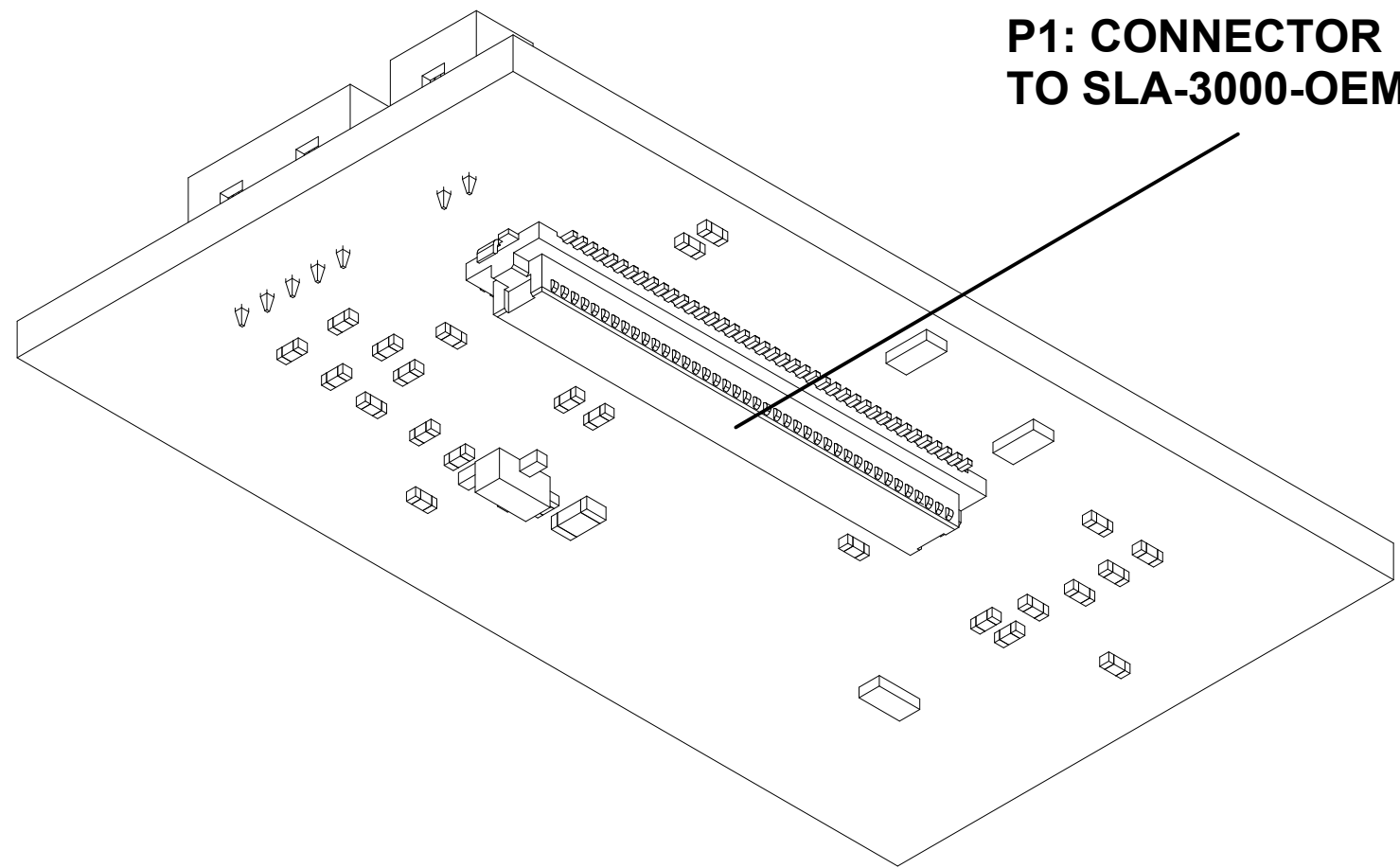
**[Ø0.09in±0.003]**  
**Ø2.20mm±0.076**



**J1: SONY CABLE CONNECTION**

**J2: I2C/  
POWER/GPIO  
CONNECTOR**

**J3: GPIO**



**P1: CONNECTOR  
TO SLA-3000-OEM**

UNLESS OTHERWISE SPECIFIED ALL DIMENSIONS IN INCHES  
TOLERANCES ARE:  
.XX +/- .01  
.XXX +/- .005

DIMENSION DRAWING		
PART NUMBER:	SLA-3000-SONY	
COMPANY NAME:	SIGHTLINE APPLICATIONS INC.	
HARDWARE REV:	E	
DWG REVISION:	E	
DRAWN BY:	WMH	
SIZE: ANSI C		SHEET 1 OF 1